



SBP-300CMTS

Ball Head Ceiling Mount



Key Features

- Color : White
- Material : Plate : Aluminum
- Product dimensions / weight : $\phi 180 \times 956.5 \sim 1667.5 \text{mm}$ ($\phi 7.09 \times 37.66 \sim 65.65 \text{'}$) / 3,750g (8.27lb)
- *Pipe can be extended once and maximum length can be up to 2524mm (99.37") (based on using SBP-900CMP)

SBP-300CMTS

Ball Head Ceiling Mount



Specifications

| | |
|-----------------------------|--|
| Mechanical | |
| Color | White |
| Material | Aluminum |
| RAL code | RAL9003 |
| Product dimensions / weight | ø180x956.5~1667.5mm (ø7.09x37.66~65.65") / 3,750g (8.27lb) |
| Pan / Tilt / Rotate Range | ±45° / ±45° / None |
| Max. load | 20kg |
| Conduit hole | 19.1mm(3/4") (M25) |
| Supported products | - Hanging Adaptor : SBP-120HMMW/140HMMW/160HMMW1/180HMMW1, etc. - Pipe extension : SBP-C15P, SBP-150CMP/300CMP/900CMP ※ For further compatible models, please visit our website or use Toolbox |

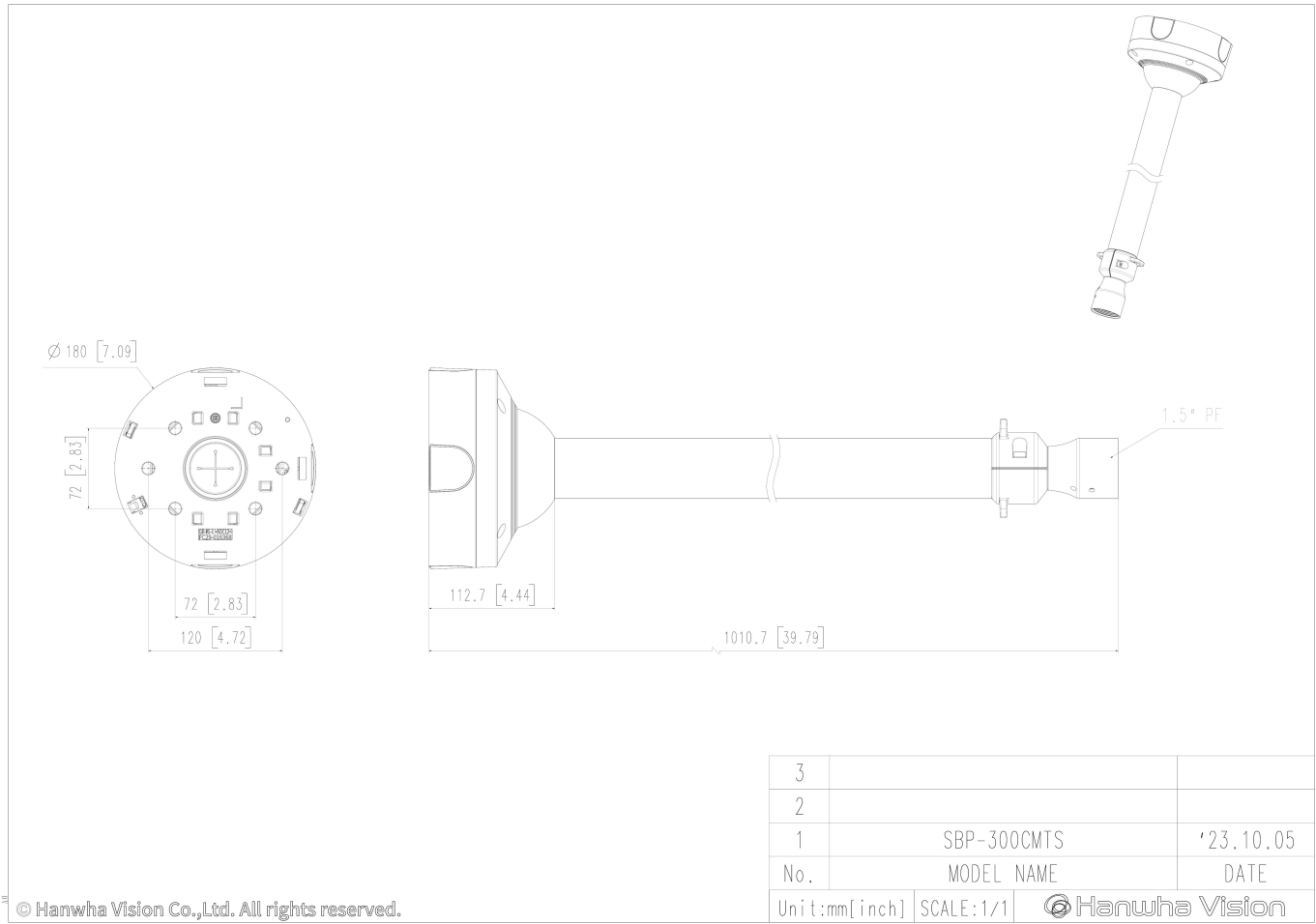
SBP-300CMTS

Ball Head Ceiling Mount



CAD

Unit:mm [inch]



© Hanwha Vision Co.,Ltd. All rights reserved.