



# Visitor Management

Invite, pre-register, track, communicate and assign access control to visitors across your facilities.

Visitor Management

Dashboard

My Visitors

My Hosts

My Operators

Visitor Activity

Visitor Invitations

Watchlists

Messaging and Alerts

Reports

Dashboard

Checked-In

10

In Lobby

0

Confirmation Required

3

Pending Arrival

17

Access Denied

22

Checked-out

65

Visitor



Rachel Adams

Te



Logan Power

Te



Hamish Hall

Te



Gee, Brian

Te



G. Brian

Te



Aditya R

Te



Randeep Saini

Te



Oliver Y

Te



Manmeet Saini

Te



Jane, Bob

Te

LP Logan Power

Logout

Copyright (c) 2024 Access Flow Global Pty Ltd

Version 1.1.524.0

03:50 PM

Monday  
17 November 2025



wesco | anixter

Welcome to Wesco Anixter

Please select an option

Visitors

Employees

Contractors

← Check-out

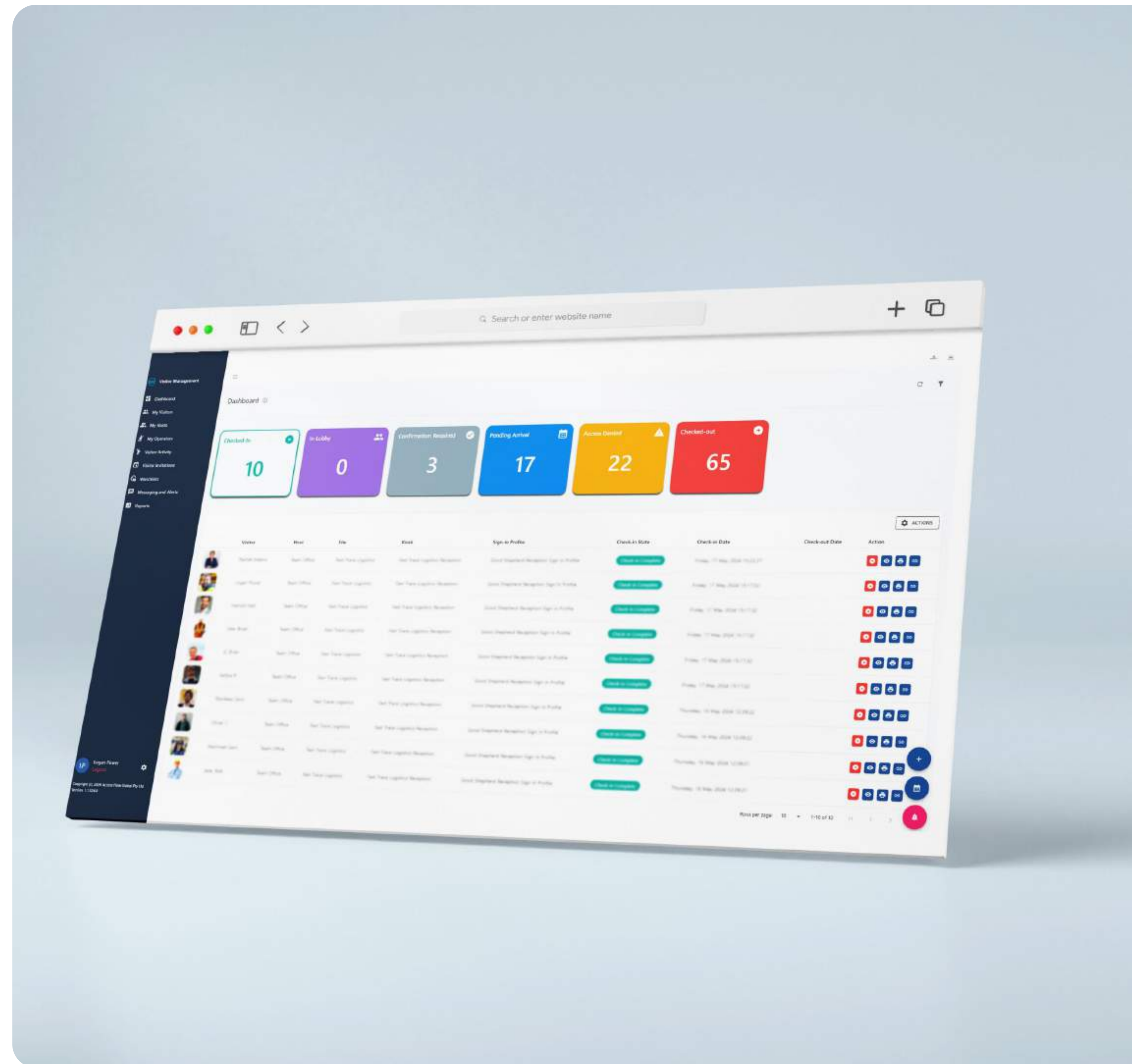
 Lobby 1

 AccessFlow

# Presenting The AccessFlow Visitor Management System

Access Flow Global believe in simplifying the visitors' experience when they arrive at a site, while making sure the security of the site is not compromised using situationally aware settings.

“With AccessFlow, we transformed our visitor management from a cumbersome, risky process to a streamlined, efficient, and secure system”.



**AccessFlow Visitor Management is a best-in-class solution consisting of:**



An intuitive Configuration App to manage the behaviour, security and design of the system.










Physical and Contactless Kiosks to manage check-ins and check-outs for sites.



A live Dashboard App to track visitor activity, communicate in emergencies & create reports

## With AccessFlow I can:

-  Enhance my visitors experience with fully tailored and dynamic, kiosk sign-in profiles
-  Optimise site security by screening visitors' information and adherence to my facility safety policies
-  Streamline arrivals with visitor pre-registration and fast QR code check-ins
-  Qualify my employees are fit to work each day through health testing measures before enabling their site access
-  Centralise emergency management and mustering of all visitors, contractors and employees on my site
-  Be notified for when persons of interest or blacklisted individuals attempt to enter site
-  Integrate to major access control platforms, reliably and affordably, so I can assign access control credentials to my visitors

## Manage The Activity and Data Of Your Staff and Visitors

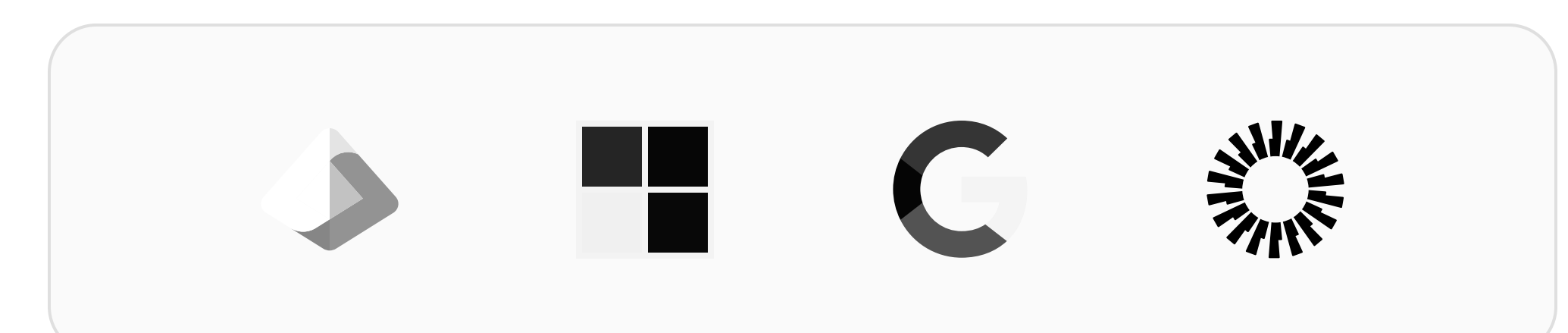


Transitioning from logbooks and Excel files is daunting, as IT must address system requirements, security, and data merging.

AccessFlow Visitor Management, available in-cloud or on-premises, offers the flexibility needed to meet these needs.



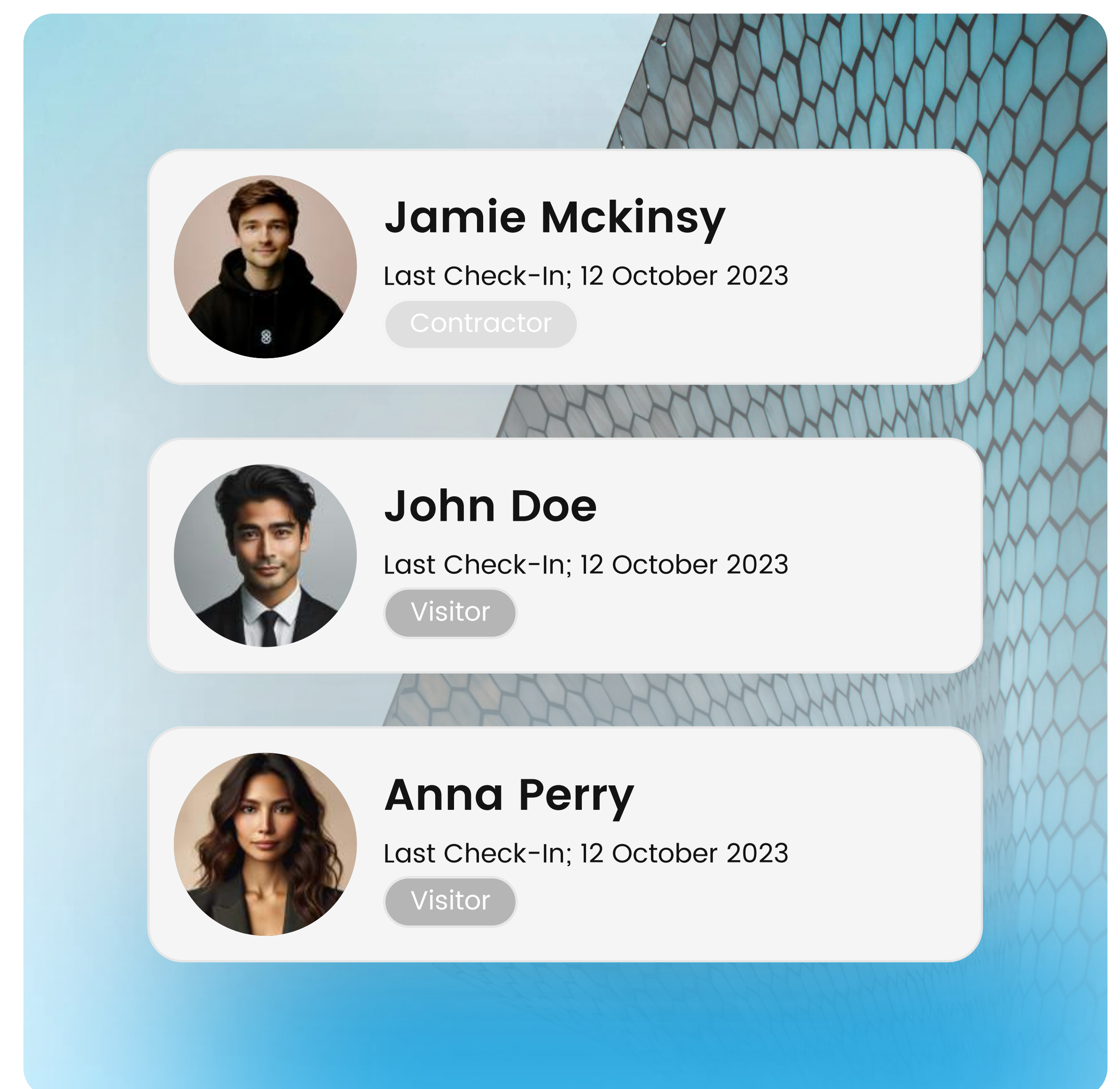
With integrations for Active Directory and SAML providers like Azure, Windows, and Google, users can quickly onboard team members.



AccessFlow supports various roles and security privileges, including hosts, receptionists, security personnel, and administrators.

## Supports Check-ins For All Types of Visitors

AccessFlow Visitor Management allows the Site Manager to configure custom visitor types with specific rules for each. Standard visitors may need to take a photo, verify their ID, and enter through the front gate, while delivery personnel might bypass photo ID and use a dedicated kiosk at the warehouse entrance.



## Flexible Check-in



### Multi-site, Multi-Kiosk

We support multi-site as well as multi-kiosk modes, all under one system.



### Multiple and Dynamic Sign-in Profiles

Change the behaviour, questions, look & feel of Kiosks and web kiosks on schedule, the click of a button, or a trigger from a 3rd party system.



### Custom Forms and Questions

Flexible options to design your own questions for the Visitors to answer during the check-in process.



### Physical and Contactless

Our kiosks run on tablets or mobile-friendly browsers for a contactless experience and support check-in from the Dashboard App for receptionists or Site Managers.



### Tenant Directory/Multiple Tenant Profiles in One Kiosk

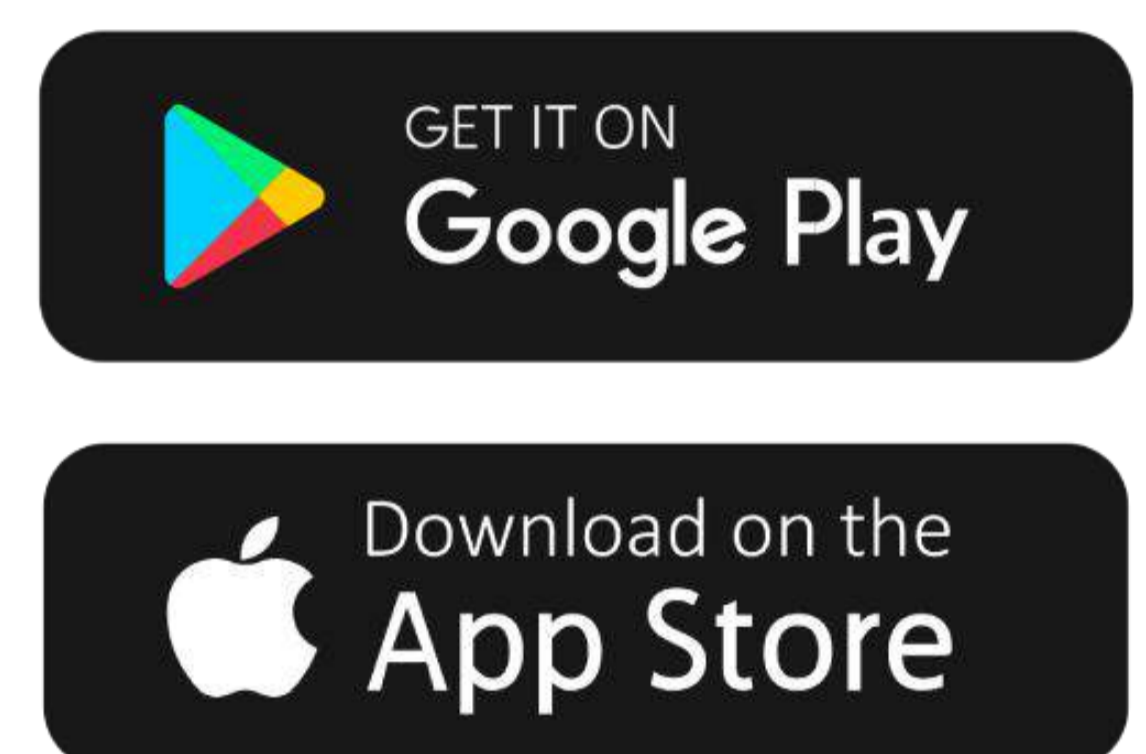
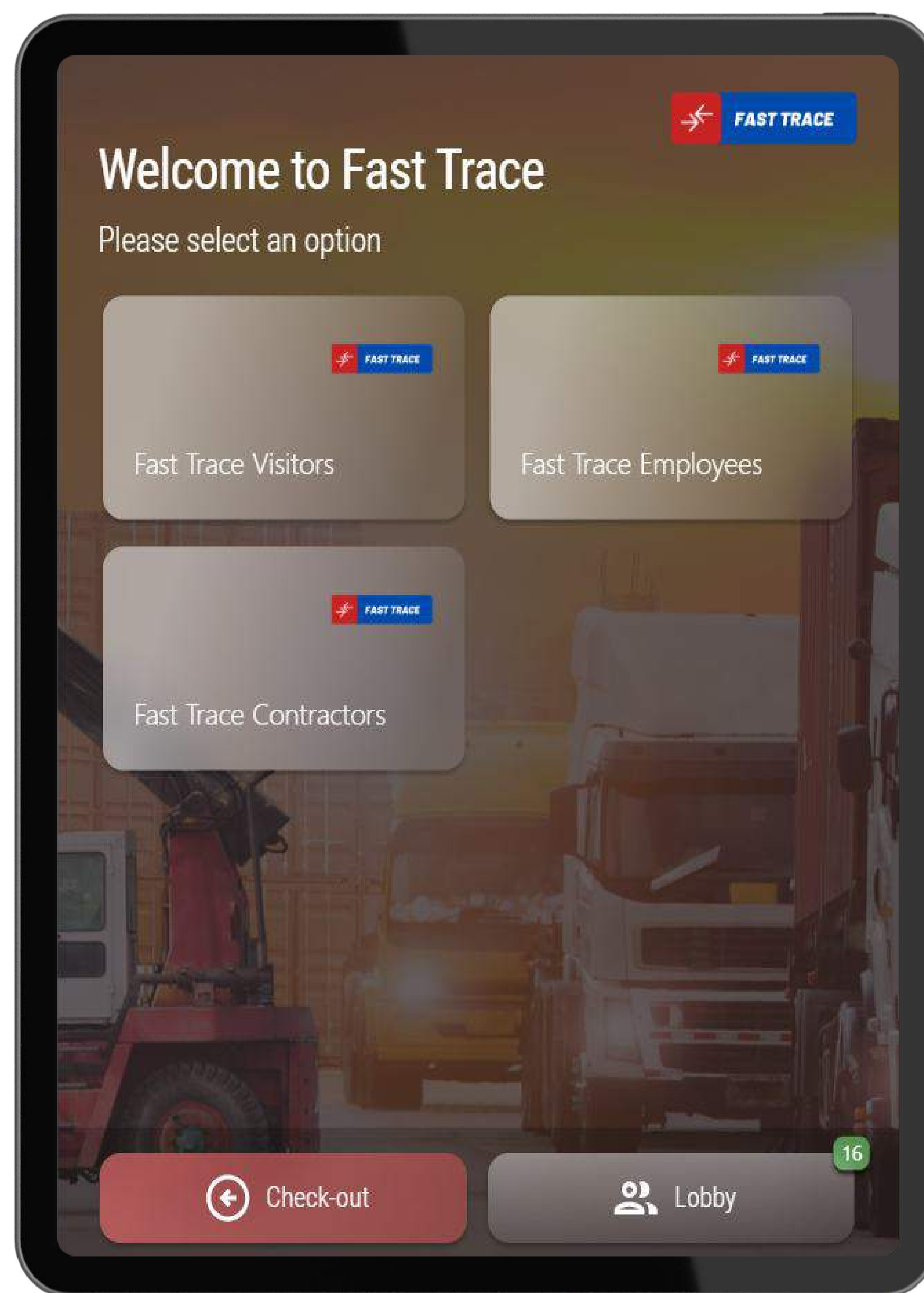
For multi-tenant buildings, create a kiosk directory page where each tenant has unique sign-in profiles and visitor requirements.

# Complete Self-Service and Remote Kiosk

- AccessFlow provides options for Integrated Self-Service Kiosks that are designed to support the entire sign-in process for Visitor, Contractors or Staff arriving at a facility.
- The Self-Service Kiosk can support ID scanners, access control self-assignment and intercom integration to provide a full remote concierge solution if desired.
- These can be particularly useful for sites with high visitor traffic or unmanned sites where a visitor needs to be qualified and checked-in to an area or facility without staff present.



# Complete Self-Service Kiosk & Mobile App



## **Safety & Secure Access**

Screen visitor details, enforcing site policies, and protecting employees with health checks and emergency mustering.

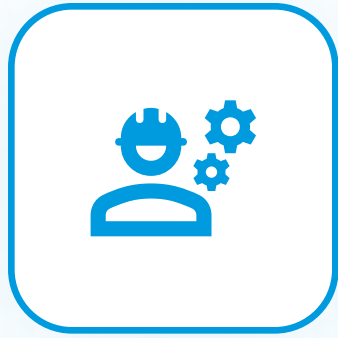
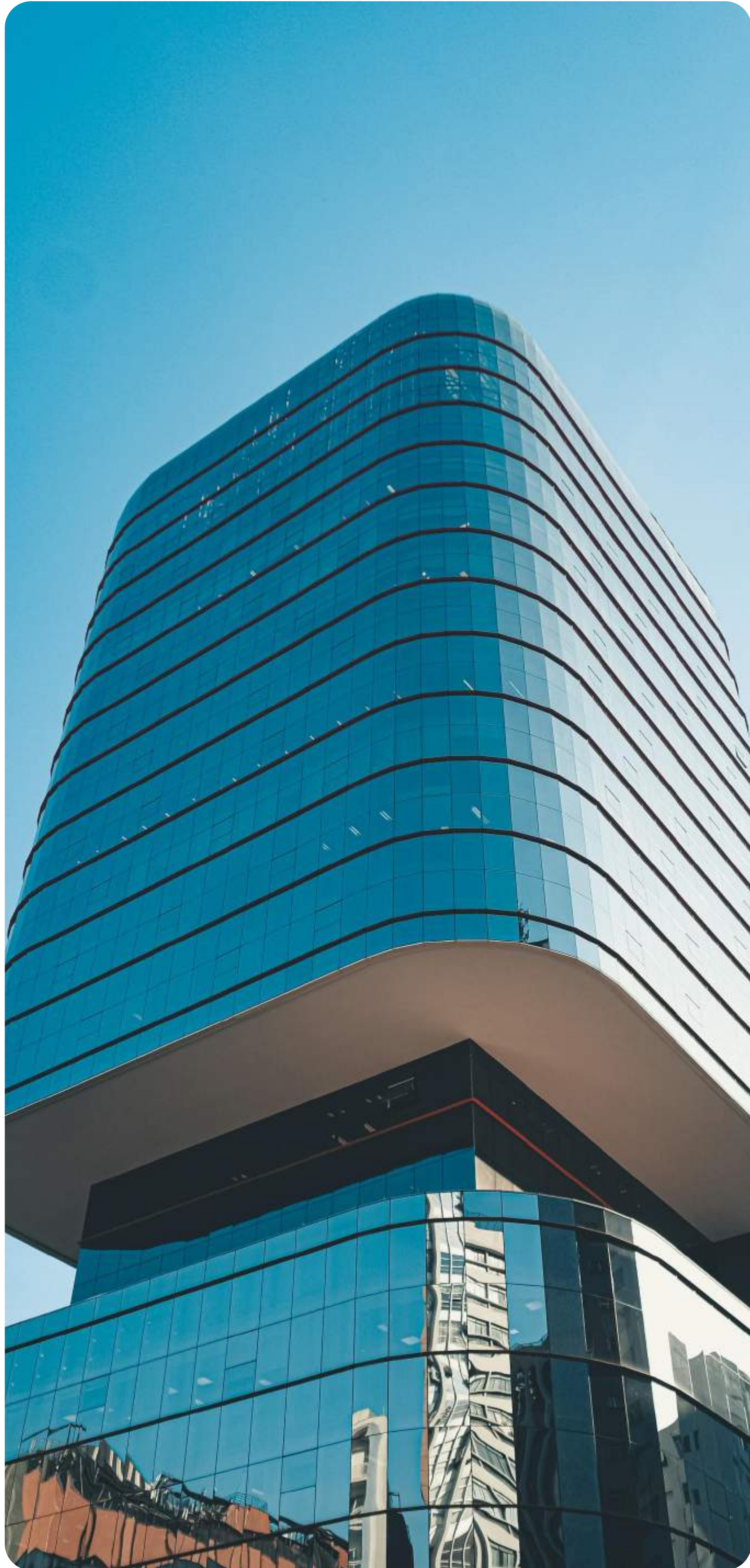
## **Mobile App Convenience**

Available on iOS and Android offers a frictionless experience with pre-registration and QR code check-ins. It allows you to monitor, approve, and manage access

## **Integrated Self-Service Kiosks** Support ID scanning, access control, and intercom integration, ideal for high-traffic or unmanned sites. with secure outbound communication.



# Enterprise Visitor Management, Made Simple



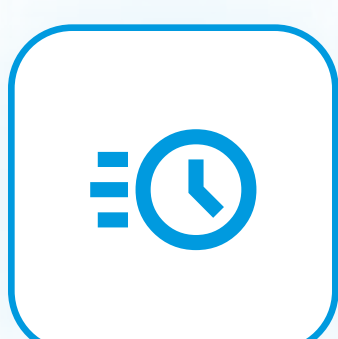
## Safety Inductions

As part of AccessFlow, Safety Inductions and Compliance Management cover all visitors, including contractors, who can complete necessary training or provide compliance documents before accessing the site.



## Lobby Mode

With lobby mode, visitors wait after check-in. Managers or hosts verify information and ID via the Dashboard App or a kiosk before approving site access.



## Fast-track check-in and check-out process

AccessFlow allows quick check-in and check-out, reducing wait times. Visitors pre-register via the web kiosk, receive a QR code for check-in, and use on-site kiosks or mobile devices for profile access and check-out.

## Visitor-Initiated Facility Access Requests



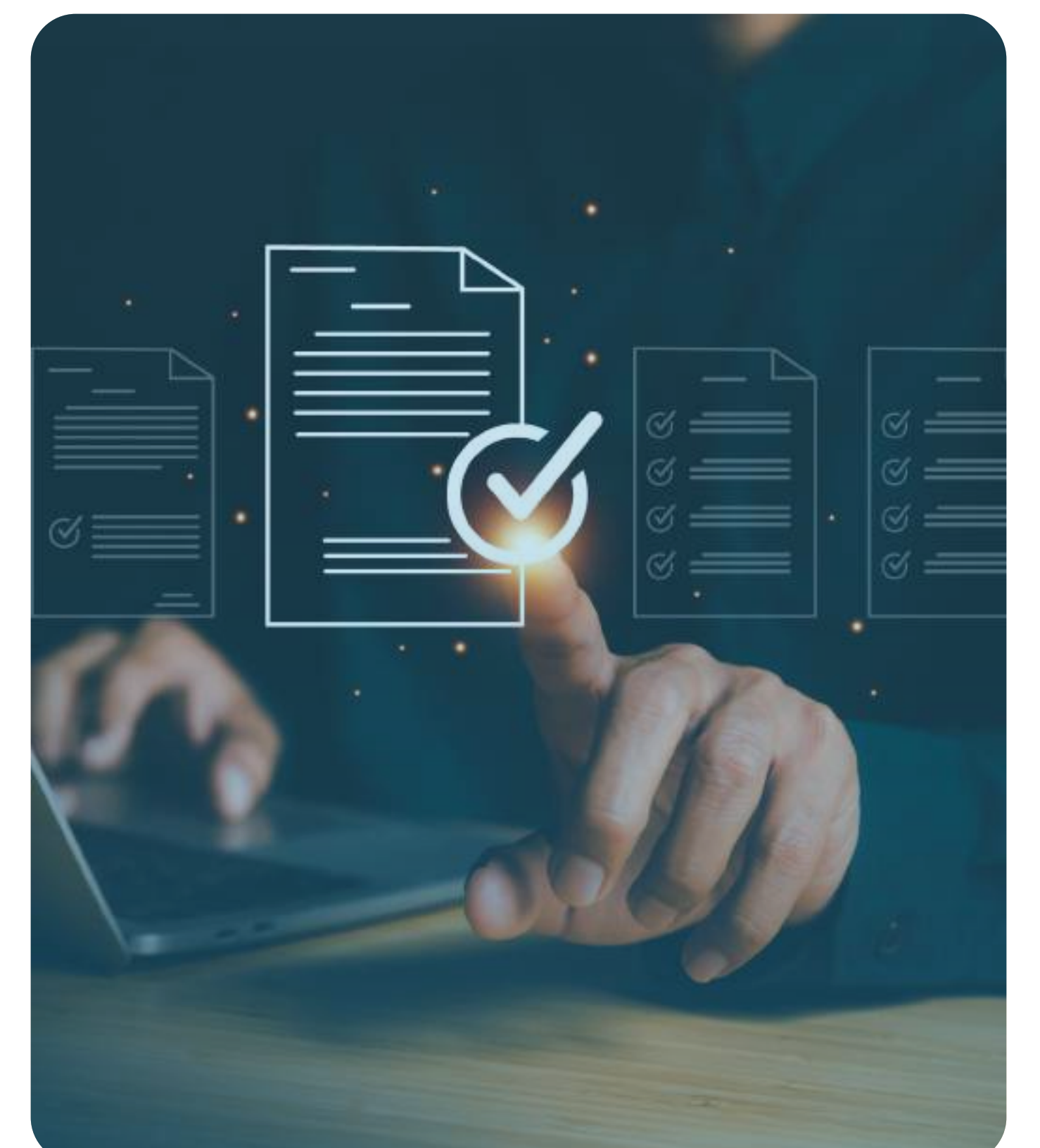
**Enhanced Accessibility:** The Visitor Access Request Service streamlines visitor communication, empowering external parties to easily plan visits.



**Efficient Approval Workflow:** Access Requests integrate training, inductions, and declarations for a comprehensive visitor onboarding.



**Supports Hybrid Deployments:** Access Request portal operates independently in AWS cloud, synchronizing requests periodically with secure outbound communication.

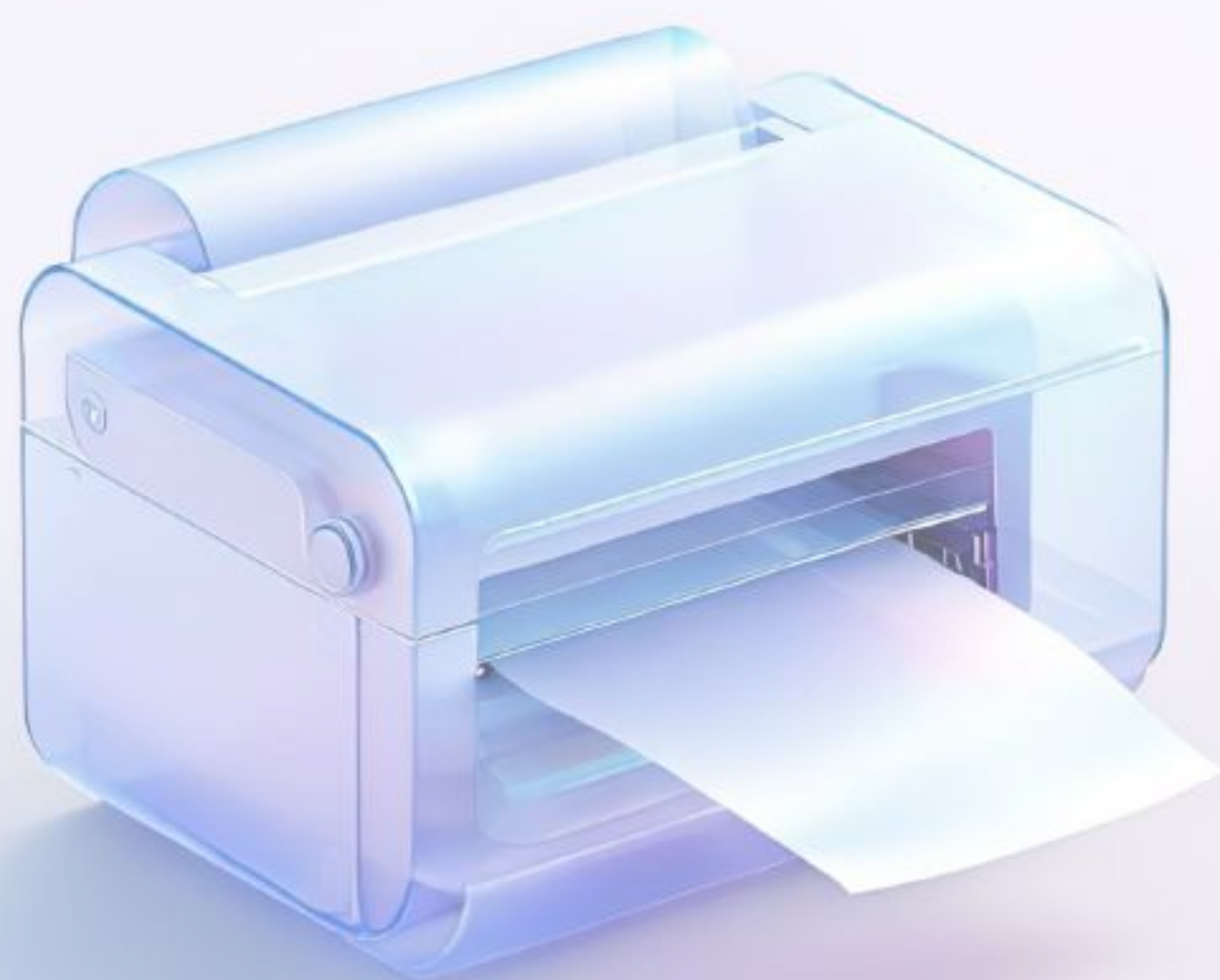


# Powerful and Intuitive Usability



## Watchlists

AccessFlow safeguards facility security by managing and tracking visitors. The Watchlist feature lets hosts mark visitors as "watch" or "deny," allowing the system to accept or reject check-ins, raise alarms, and send notifications.



## Print badges automatically or on-demand

VM connects to badge printers to print visitor labels after check-in, facilitating quick check-out and facility access. The system also supports single or bulk badge printing through the Dashboard.



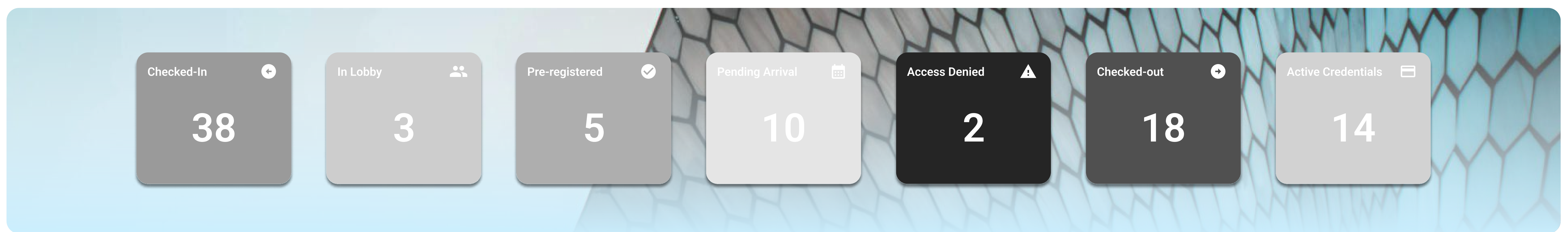
## Reporting

AccessFlow generates reports on visitor activity and system usage, covering kiosk activity, question responses, and access control. It also supports email reports and uploads to third-party tools.



## Secure OpenAPI

We encourage using our Visitor Records and System APIs for data analytics and system control. Our fully documented, version-controlled API includes features like paging, sorting, and data shaping.



## Monitor Activity Across All Of Your Sites

The intuitive visitor Dashboard App lets authorized users monitor activity, generate reports, and understand trends. It also allows:

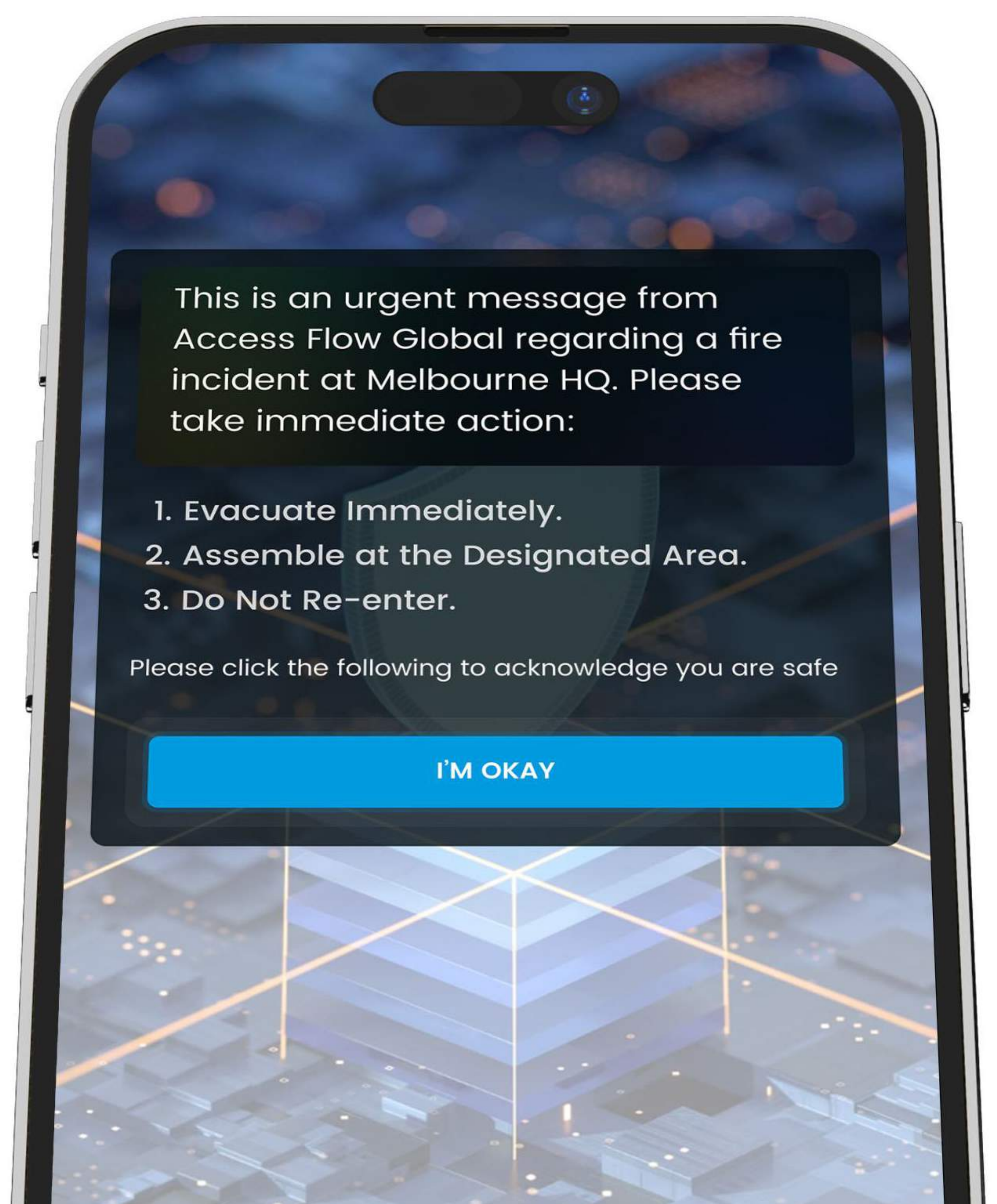
- Activity monitoring (e.g., Check-in, Check-out) of a particular kiosk at a site or, across all sites.
- For a multi-site and multi-kiosk model, this helps your organisation track any bottlenecks in real-time.
- Quickly create muster reports and initiate emergency management procedures
- Operators can send notifications, initiate invitations, assign access control and view reports.

## Centralised Emergency Management

AccessFlow includes in-built emergency management, sending notifications via email and SMS.

Visitors can acknowledge they are OK with a one-tap link in the notification. Real-time muster reports help perform roll calls and account for checked-in visitors.

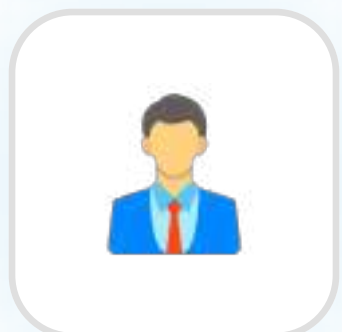
AccessFlow's Access Control Integration centralizes evacuation and mustering for staff, contractors, and visitors, eliminating inefficiencies from separate databases.



# Visitor Management Users and Roles

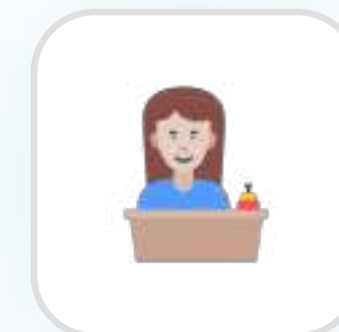
AccessFlow recognises the individual user roles that function across the Visitor Management platform. Each role type can be setup with specific permissions to ensure they can only perform their allocated duties.

Here are some typical examples:



## Facility/Security/ Health & Safety Manager

- Automate Sign-In Profiles Switching
- Muster Reports and Check-off
- Scheduled Activity Reports
- CCTV Integration
- Invitation Approvals
- Access Request Approvals



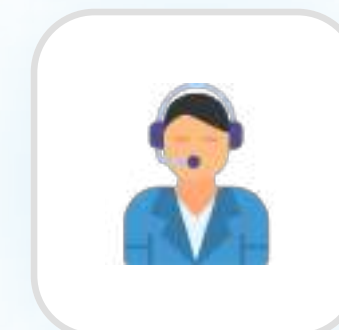
## Security Guard/Receptionist

- Activity Dashboard
- Visitor Check-in
- Watchlists and Alerts
- Assign Access Control Credential
- Assign Lockers, Meeting Rooms & more
- Emergency Messaging



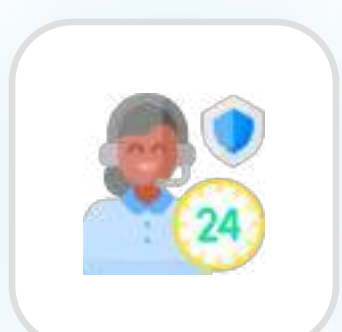
## Visitor /Employee

- Pre-Registration before arrival
- QR Code for Fast Check-In/Out
- Sign-in with Access Control Credential
- Questionnaires & Declaration
- Emergency Notifications
- Access Requests
- Screening – Drug & Alcohol Testing



## Host/Escort

- Custom Invitations
- Customisable Visitor Types
- Email and SMS Notifications
- ACS or AD Import
- Integration with Outlook, Slack, etc.
- Lobby Mode
- Deliveries



## System Integrator /Administrator

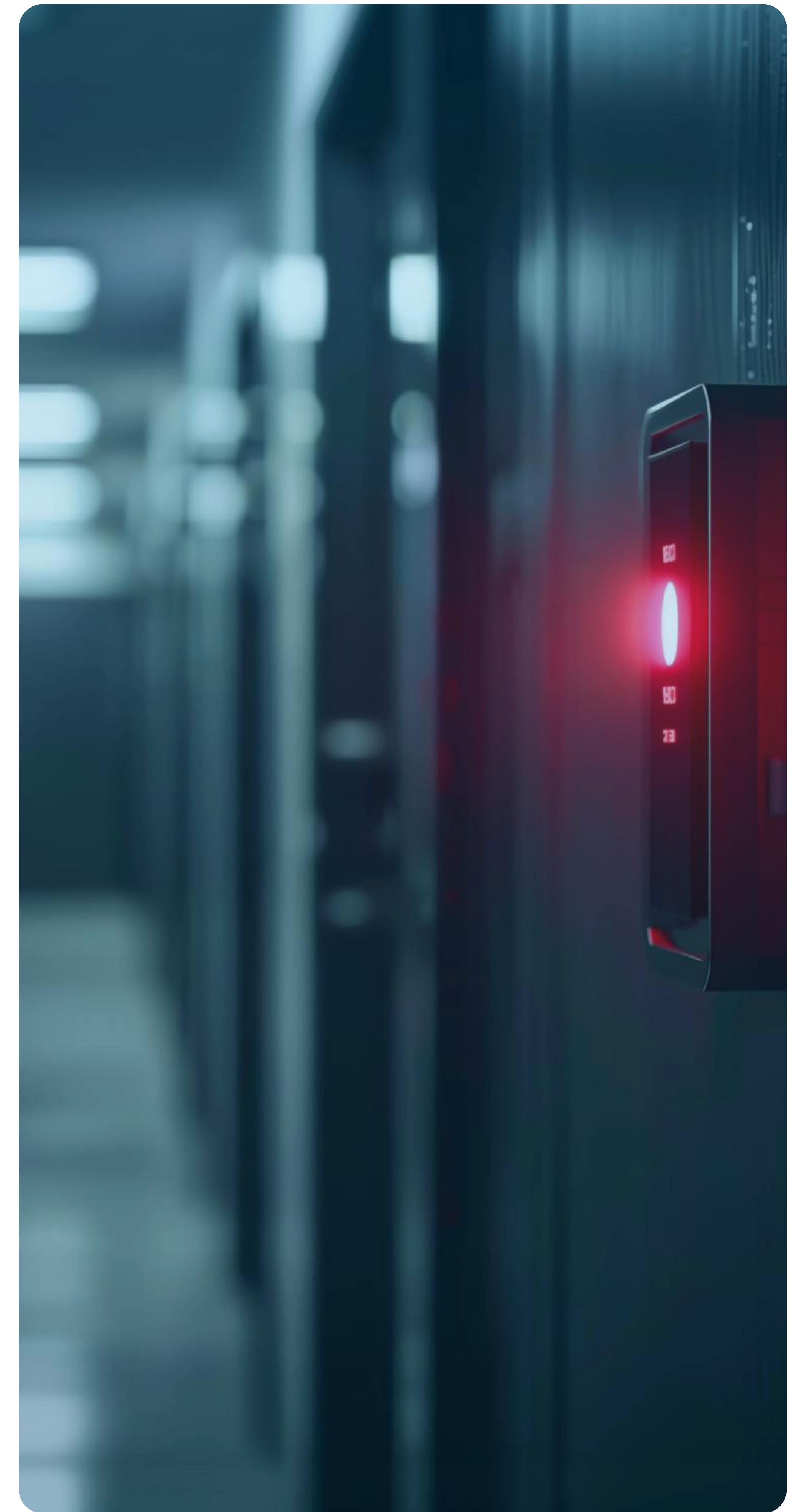
- Remote Kiosk Management
- QR Code-Based Kiosk Tablet Registration
- Workflow and Sign-In Profile Builder

# The Experts in Access Control

Access Flow Global has over a decade of experience developing 3rd party integrations for Access Control systems in the Electronic Security market, deployed across 7 continents. We excel in solving unique operational challenges, streamlining credential issuance and onsite check-in.

Our integrations include Genetec Synergis, Gallagher Command Centre, and Inner Range Integriti, enabling facilities to issue visitor credentials and manage access seamlessly.

AccessFlow also ensures staff readiness before shifts by requiring sign-in at kiosks with configurable questions or tests like temperature scans or breathalyzer tests, ensuring onsite safety compliance.



AccessFlow assigns QR codes to visitors for temporary access to QR code-equipped doors, ideal for specific floors in commercial buildings or after-hours access.

AccessFlow manages access to lockers, meeting rooms, and carparks via an intuitive Visitor Dashboard. Visitors can use their license plate as a credential for secure carpark access.

**integriti**  
INTEGRATED SOLUTIONS

**Genetec**  
Security Center.

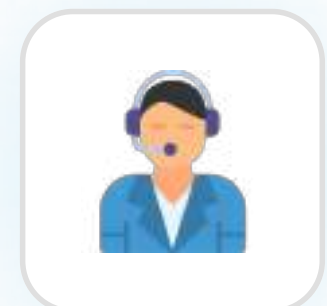
**GALLAGHER**

# Other Third-Party Integrations

## Importing Hosts

We can synchronise visitor hosts or employees from an external database or third-party system for example:

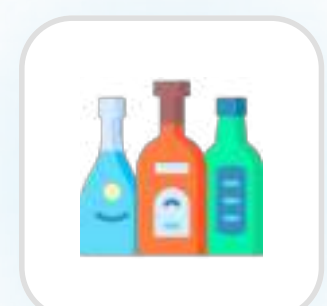
- CRM like Salesforce
- Access control systems (e.g., InnerRange Integriti, Genetec Security Center, Gallagher Command Centre)
- Active Directory and SAML integration
- Periodically populated file



## Data Export to third-party systems

VM integrates with third-party systems to automatically synchronize visitor and activity data with existing workflows.

- CRMs (Salesforce, Dynamics 365)
- Security platforms (Genetec Security Center, Gallagher Command Centre, Inner Range Integriti)
- Email, SMS, and third-party notifications (Slack, Teams)



## Third-party screening system/device

Amid growing safety concerns, this feature checks visitor parameters before site access, alerting hosts if checks fail.

- Body temperature/thermal check
- Pre-authorisation of a credential from a third-party system (e.g., Access Card, Face Recognition etc.)
- Electronic Drug & Alcohol Tester



## CCTV

VM integrates with Video Management Systems like Genetec Security Center and Milestone X-protect, providing a portal to view CCTV streams of visitors at kiosks and monitor their activity on various imported cameras.



# Data Privacy

At Access Flow, we prioritize customer data privacy and security. We enforce industry best practices like SAML 2.0 for authentication and single sign-on, with all data encrypted both in transit and at rest. Hosted on AWS, our platform ensures data privacy through innovative user-configurable features.

- Active Directory/LDAP integration avoids storing passwords in AccessFlow.
- Returning Visitors must enter OTP sent via SMS or email to verify identity.
- Visitors have the option to opt out of receiving emails and SMS.
- Confirmation details of new Visitors can be hidden from others with kiosk visibility.



- Hide personal details on the Kiosk for returning visitors (only name and photo shown for confirmation).
- Option to turn off Host display; visitors search by mobile number or email address.
- Photo ID data extraction can exclude storing the photo (off by default).

# Why AccessFlow?

Access Flow Global are an Australian owned, software solutions company founded with the purpose of creating innovative technology to better connect people, facilities, assets & services and to make people's lives easier.

As an innovative technology company who strives for excellence in all that we do and, an emerging leader in Visitor Management solutions, we are confident that you are investing in a product that will meet your customer needs today and, in the future as the market evolves.

Visitor Management is just one component of the AccessFlow Unified Visitor, Workforce and Compliance Management platform which is built to automate safety, enforce compliance and increase asset performance for high-risk organisations across the globe. AccessFlow is the missing technology piece that ties it all together.



# AccessFlow Intregriti Kiosk Bundle

## Available through Wesco Anixter Security Branches



AccessFlow

integrity

Security starts at the front door and the future is frictionless, fast, and fully integrated. The AccessFlow Kiosk + Integriti bundle brings simplicity and control together in one smart solution.



### AccessFlow Essential Suite

- ✓ 1 x Physical Kiosk License
- ✓ 1 x Web Kiosk License
- ✓ 500 SMS per month
- ✓ Access Control Integration with Integriti
- ✓ Microsoft Entra ID Integration
- ✓ Workforce Management with 1 Identity included

### Customisable Kiosk Package

- ✓ 1 x Physical Kiosk
- ✓ Ipad or Android tablet
- ✓ Brother QL-820NWB Label Printer
- ✓ Adjustable Tilt Screen
- ✓ Branded Panels & Logo Placement
- ✓ Concealed Cables for permanent power



AccessFlow  
— GLOBAL —

# Global Headquarters

**Address**

6/20-22 Hardner Road, Mount Waverley  
VIC 3149, Australia



**Phone**

(+61) 1300 007 213



**Email**

[info@accessflowglobal.com](mailto:info@accessflowglobal.com)



**Website**

[accessflowglobal.com](http://accessflowglobal.com)

